

# Bow-Concord I-93 Transportation Planning Study



MasterPlan Concord  
Community Forum No. 1  
Saturday, November 17, 2003

## *Project History/Overview*

1992 I-93 Feasibility Study

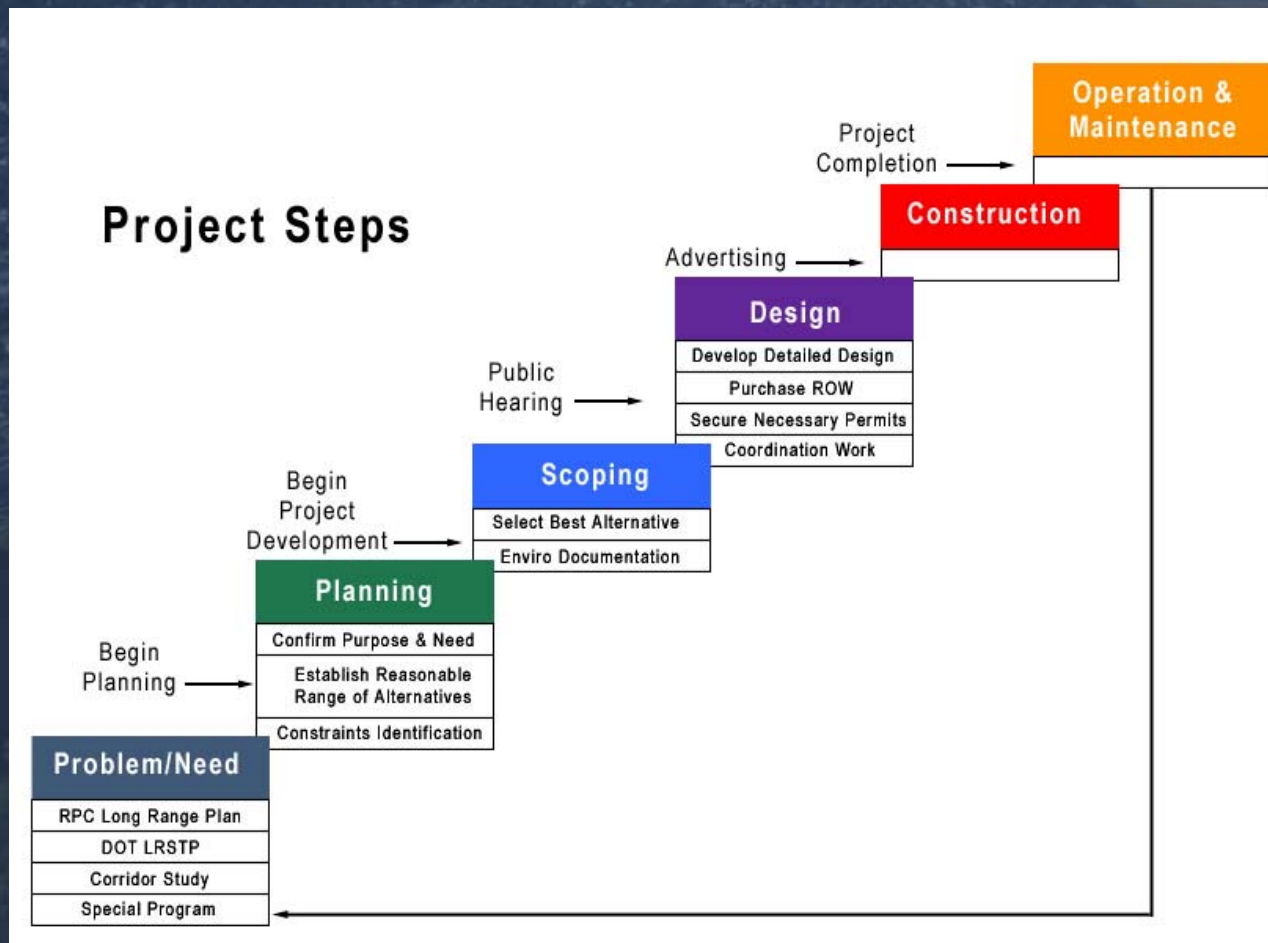
Exit 13 Improvements

2020 Vision for Concord

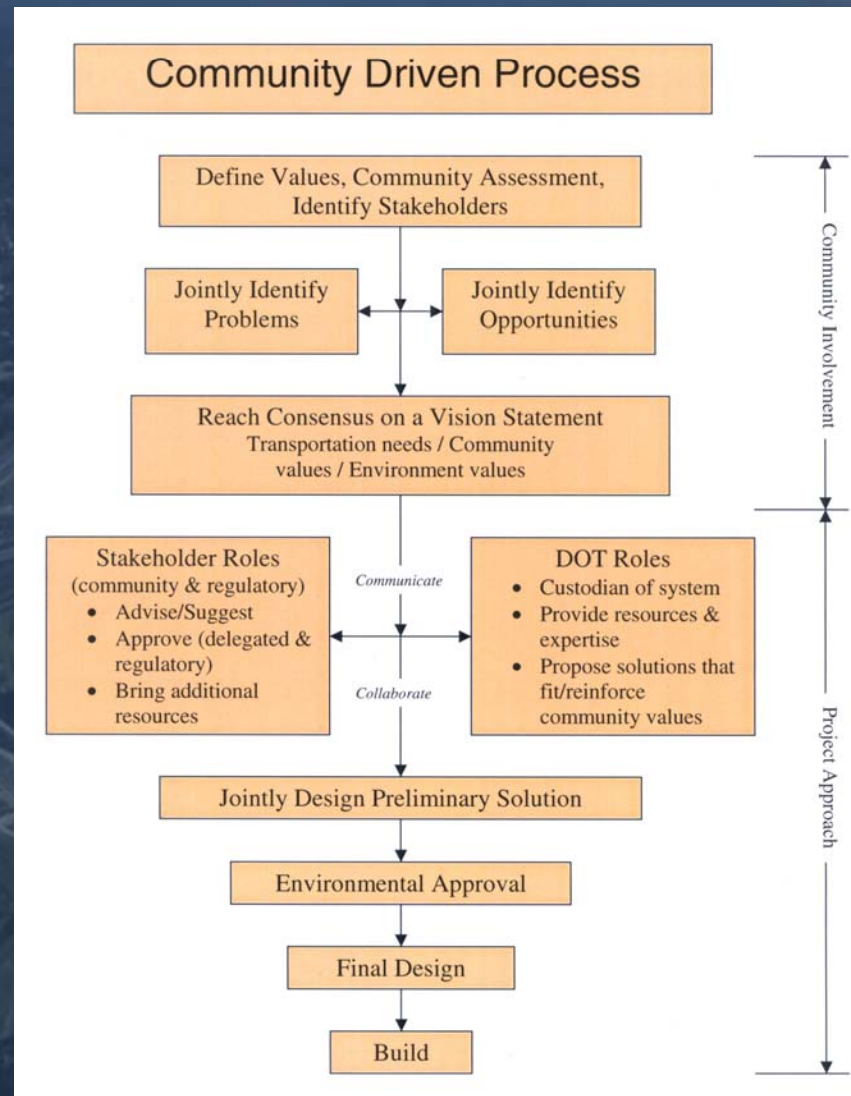
Project Development Process



# *Project Development Process*



# Bow-Concord I-93 Transportation Planning Study



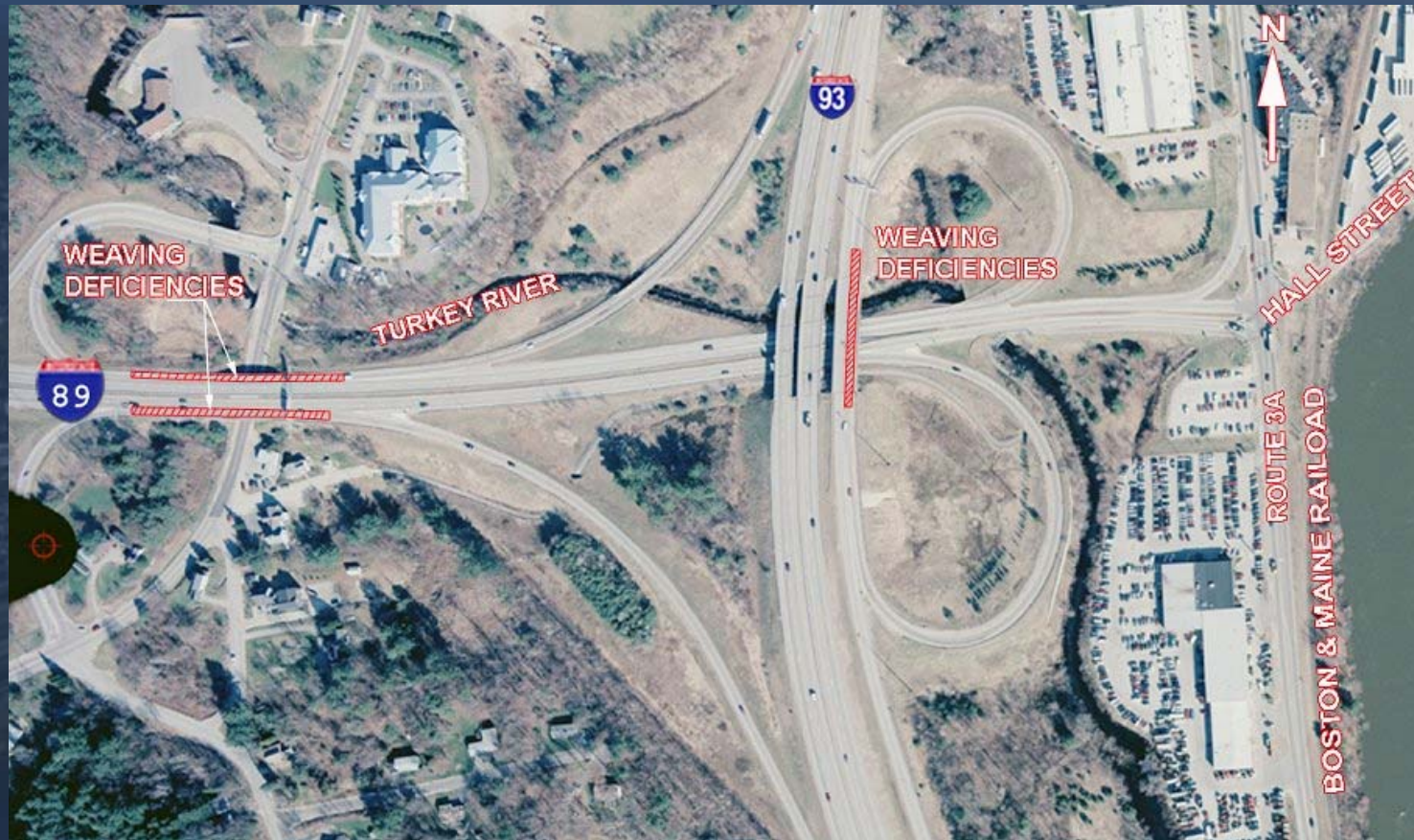
# Bow-Concord I-93 Transportation Planning Study



Project Limits



## Bow-Concord I-93 Transportation Planning Study



I-89/I-93 Interchange



Bow-Concord I-93  
Transportation Planning Study

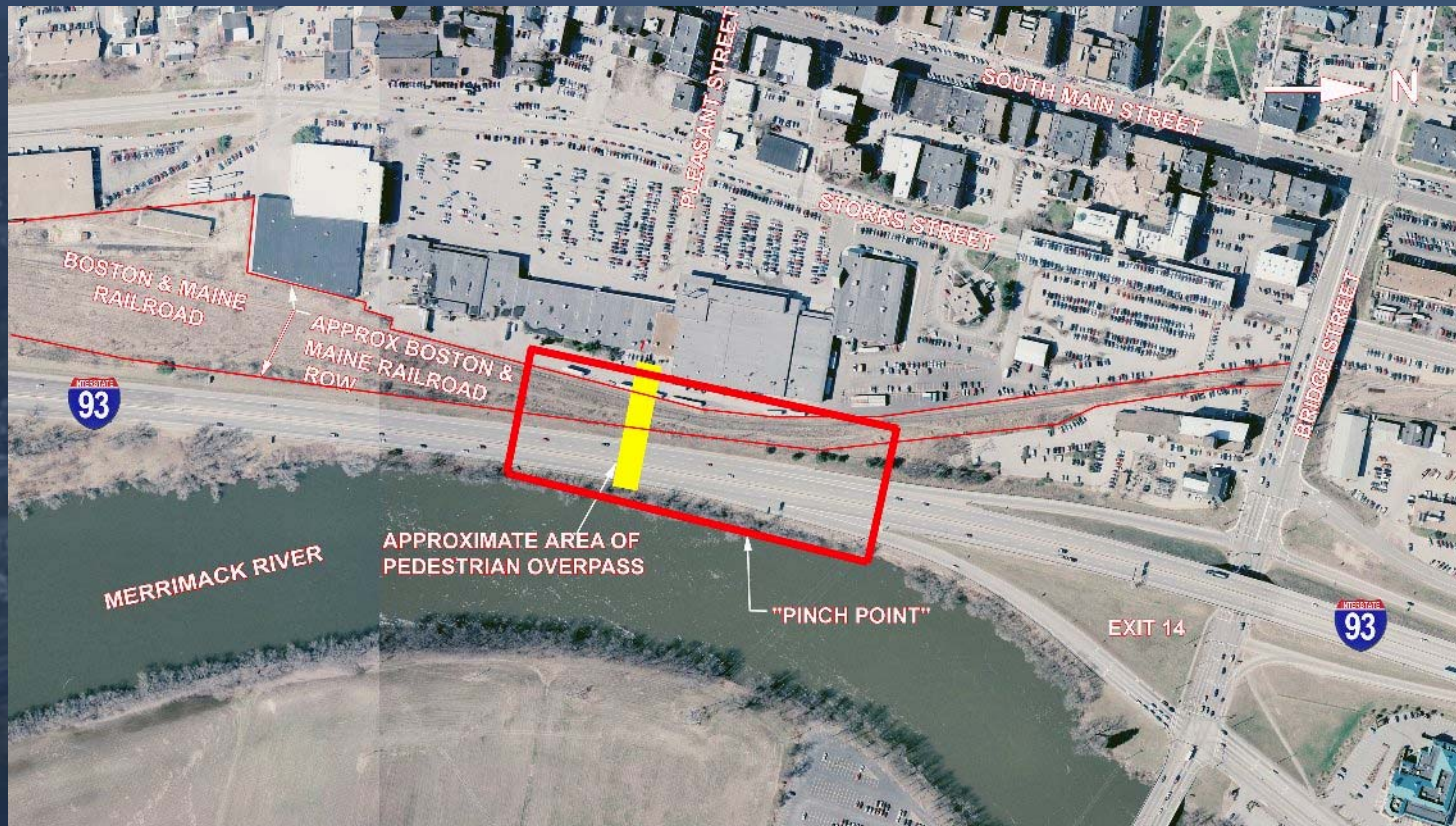


Exit 12  
Bow Junction/South Main  
Street





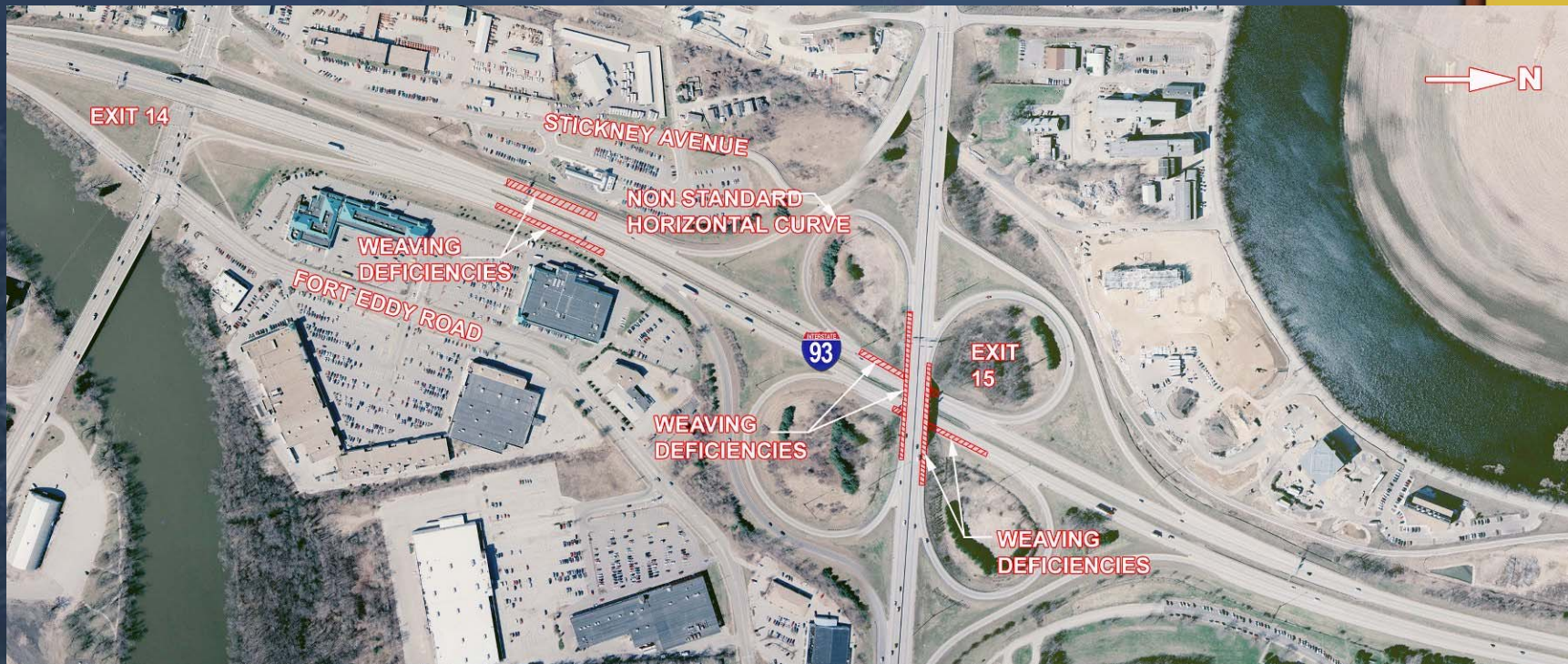
## Bow-Concord I-93 Transportation Planning Study



Exit 14  
Bridge Street/Loudon Road



# Bow-Concord I-93 Transportation Planning Study



Exit 14/15

## *Project Scope*

I-93 From I-89 to I-393

Improvement to I-93 Exits except Exit 13

Consideration of Concord 2020 Vision

- I-93 Widen to Six Lanes

- I-93 Westward Alignment Shift

- Reconfiguration of Exits 14 & 15

- Shift I-93/Loudon Road Relationship

- Possible Connection from I-89 to 106

- Exit 2 1/2 on I-393

- Exit 16 1/2 on I-93

- Commuter Rail Preservation

- Pedestrian & Bicycle Access

- Merrimack River Access

- Visual Aesthetics



# Bow-Concord I-93 Transportation Planning Study



**Exit 14**

**Existing Condition**

## Design Visualization



**Exit 14**

**Proposed Condition**

## *Study Objectives*

- Develop a Purpose and Need Statement
- Develop Range of Reasonable Alternatives
- Summary/Classification Report



# *Public Participation Process*

Citizen's Advisory Task Force (6)

Technical Review Committee

Community Meetings/Forums

Project Newsletter

Project Website [www.i93bowconcord.com](http://www.i93bowconcord.com)

Project Design Center

# Bow-Concord I-93 Transportation Planning Study



MasterPlan Concord  
Community Forum No. 1  
Saturday, November 17, 2003